

Urlaub Dolcevacanza



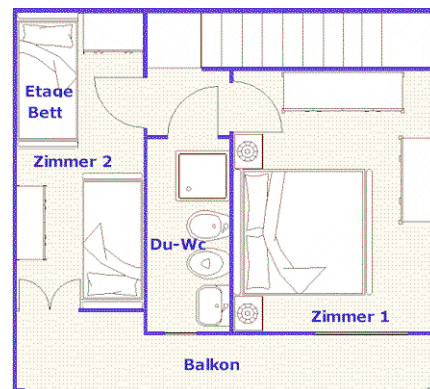
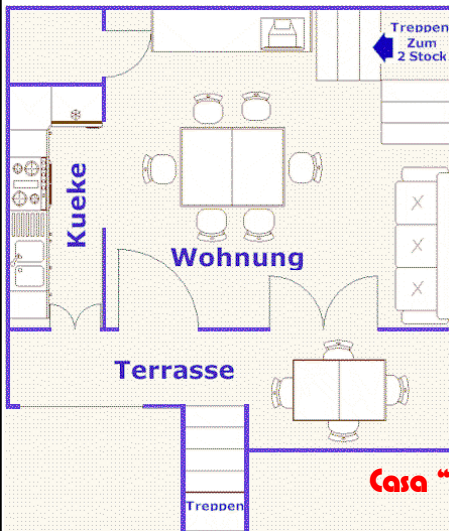
Ferienhauser - Ferienwohnungen

SILVI MARINA - ABRUZZEN - ITALIEN

Via dante Alighieri 47 pal.12/5

Via dante Alighieri 47 pal.10/8

Via Dante Alighieri 10 pal.111/15



Casa "PINO" = Casa "ROSA"

Italia



Abruzzo



Silvi Marina



Bus Ausfluege nach ROMA

LINEA GIULIANOVA - ROMA / ROMA - GIULIANOVA

ANDATA	FER	GI	GI	STA - FES		
Giulianova	8.10	13.20	14.50	18.20		
Roseto	8.25	13.35	15.05	18.35		
Scerne	8.30	13.40	15.10	18.40		
Pineto	8.35	13.45	15.20	18.50		
Silvi Marina	8.45	13.55	15.30	19.05		
Montesilvano	9.00	14.10	15.40	19.20		
Pescara	9.30	14.30	16.00	20.00		
Chieti Scalo	9.45	14.45	16.15	20.15		
Roma / Tiburtina	12.00	17.00	18.30	22.30		
RITORNO	FER	FER	FER	FES	FES	STA FES
Roma / Tib	13.30	18.30	20.00	19.00	19.30	22.45
Chieti Scalo	15.45	20.45	22.15	21.15	21.45	1.00
Pescara	16.00	21.00	22.30	21.30	22.00	1.15
Montesilvano	16.15	21.15	22.40	21.40	22.10	1.30
Silvi Marina	16.25	21.20	22.50	21.50	22.20	1.40
Pineto	16.35	21.30	23.00	22.00	22.30	1.45
Scerne	16.40	21.40	23.10	22.10	22.40	1.50
Roseto	16.45	21.50	23.20	22.20	22.50	2.00
Giulianova	17.00	22.05	23.30	22.30	23.00	2.15
GI = Corse giornaliere - Tägliche Fahrt -						
FER = Corse feriali - Werk Tage Fahrt -						
FES = Corse festive -Feier Tage Fahrt						
STA = Stagionale Dal 15/06/2004 al 15/09/2004						

Il biglietto si acquista sull'autobus. - Die Karte kann auf dem Bus kaufen - The ticket is purchased on the bus.
biglietto andata - Einfahtticket - one-way ticket - 15.00 €